

*Sprouton Manor Hotel*  
LOVE STORIES

Every love story is beautiful, but yours should be unique



## THE PERFECT *setting*

Sprowston Manor Hotel and Country Club is located in stunning Norwich. There is an elegant oak tree lined driveway entrance to the hotel, making for a grand arrival.

The historic hotel includes 170 acres of pristinely kept parkland, making for the perfect backdrop to any wedding photos you want to take.

Should you wish to further explore the area, Norwich city centre is only a short 15-minute drive away from the hotel.

“ We feel so lucky to have found Sprowston Manor. It was the perfect place for our wedding day and we can't wait to return. ”

**KELLY & PETER**



## TIMELESS *elegance*

Your choice of venue is an essential part of your wedding and will be the place you create memories that will last a lifetime.

Sprowston Manor Hotel is the perfect backdrop to begin the next stage of your life - Impeccably set in our classically landscaped gardens, our stunning 16th century manor house has a distinctive character that creates an elegant & romantic atmosphere on your special day.

“ Our guests had an amazing day. They loved all the food and the layout of the rooms. ”

KATE & MARCUS

## CEREMONY *rooms*

Room hire prices are for the ceremony room hire only and therefore do not include registrar's fees. Ceremonies are performed at 12pm, 1pm, 2pm, 3pm & 4pm - seven days a week.

For our latest room hire prices call our wedding specialist, who will be more than happy to help.

Please contact Norwich Registrar Office directly via the website: [www.norfolk.gov.uk](http://www.norfolk.gov.uk)

The hotel charges are in addition to the Registrar Fee. (The hotel takes no responsibility for booking the registrar).

“  
Thank you for such an amazing day, we couldn't have wished for better - it was filled with joy and laughter and we will definitely be back!”

DAN & SASHA



We have various rooms available for ceremonies, each individual in design and offering options to suit every budget, style and guest list, ranging from the intimate to larger gatherings.



### Norfolk Suite Marquee

Ceremony – 300

The Norfolk Suite is our beautiful, permanent marquee which is surrounded by the stunning grounds of Sprowston Manor overlooking the Manor Gardens. The Pagoda is only available when booking the Norfolk Suite Marquee.



### **Suffolk Suite**

Ceremony – 100

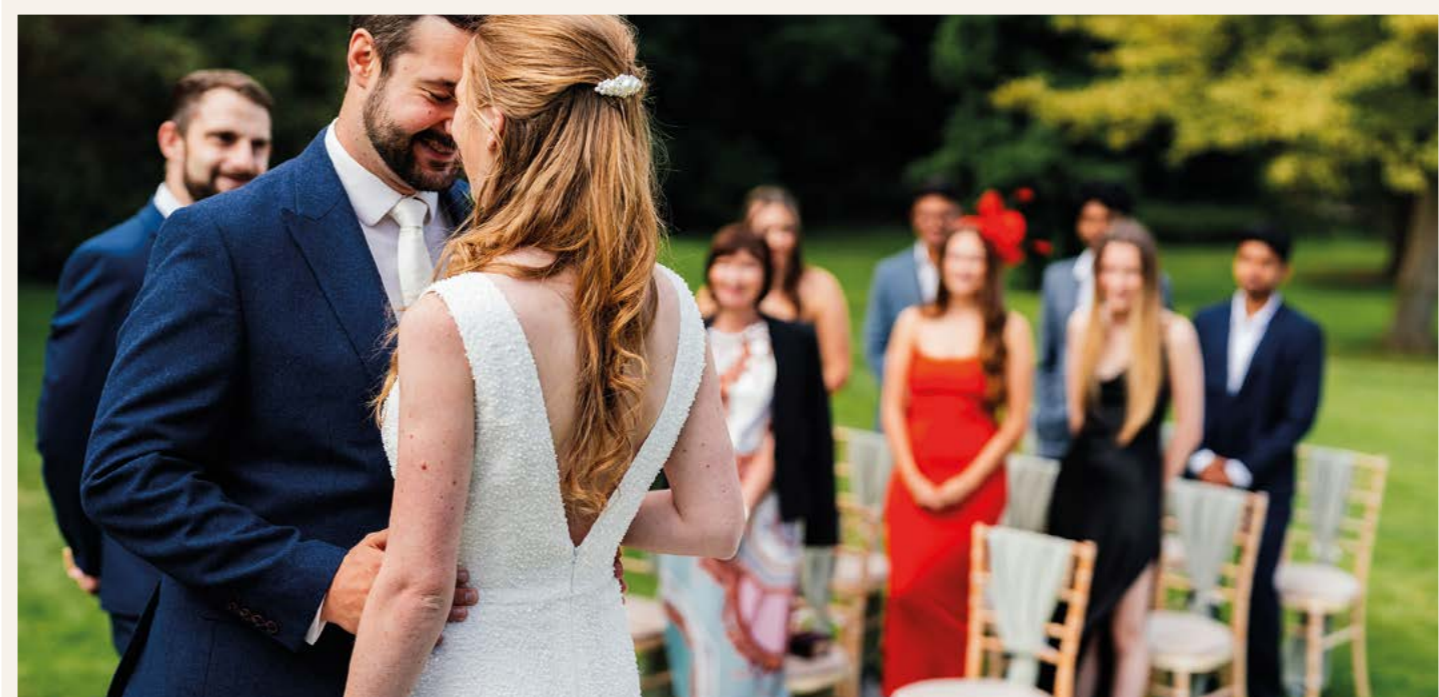
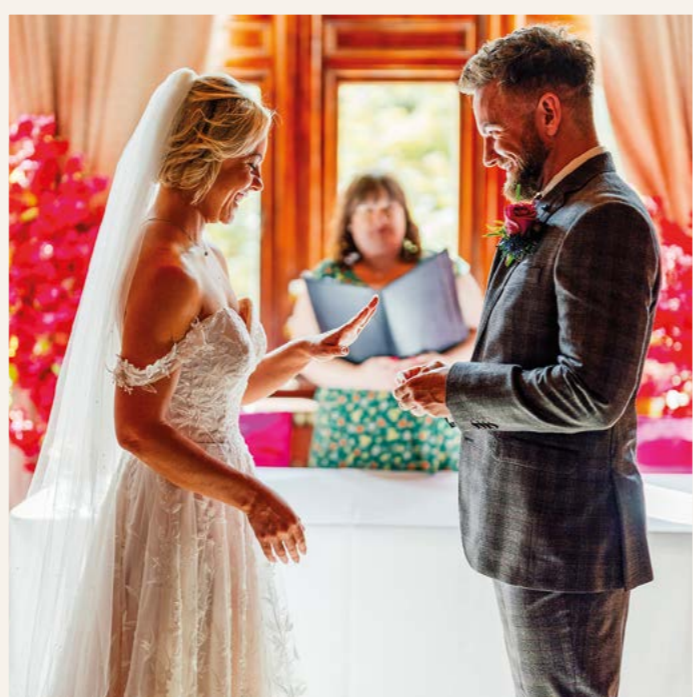
The Suffolk Suite is a beautiful room, It boasts an array of amenities from its own large stage to a private bar, high ceilings and stunning Oak wood panels.



### **Somerleyton Room**

Ceremony – 50

Situated in the oldest part of the Manor House, our Somerleyton Room is ideal for a more intimate ceremony.



## RECEPTION *rooms*

We have an array of reception rooms available. Here you can design your chosen suite to suit your personal taste, with the help of our amazing wedding team.

“  
*The venue looked beautiful and our vision was perfectly executed. You have been amazing from start to finish, great communication, always helpful and friendly. We couldn't have done it without you!*”

**CARLA & TOM**





### Norfolk Suite Marquee

Wedding Breakfast **300** | Reception **300**

Perfect for large celebrations, the Norfolk Suite Marquee can host up to 300 guests, allowing for your guests to take true advantage of the large stage, dance floor and private bar on offer. This suite backs onto our beautiful 18-hole championship golf course, which serves as a great backdrop for wedding photographs.



### Suffolk Suite

Wedding Breakfast **100** | Reception **100**

Situated in the main Manor House, overlooking the stunning Manor Gardens, the Suffolk Suite is the perfect location for your wedding reception. With a private bar, large stage and welcoming dance floor, you can celebrate with all your loved ones in style.



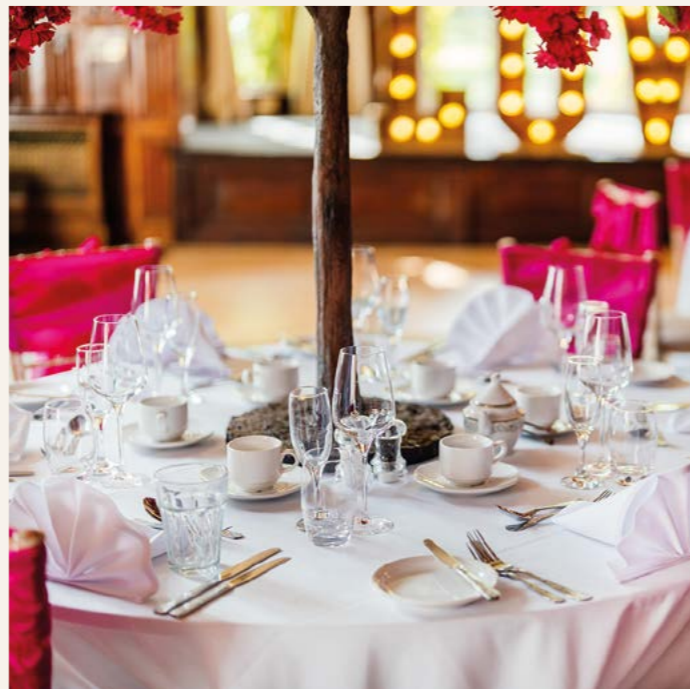


### Somerleyton Room

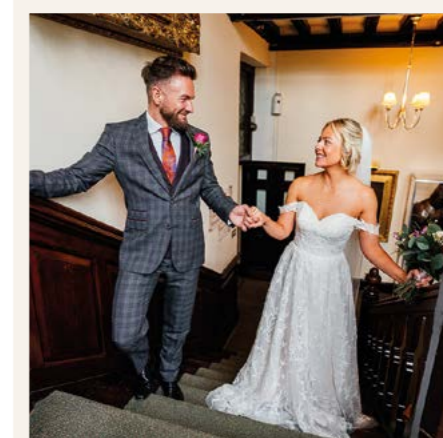
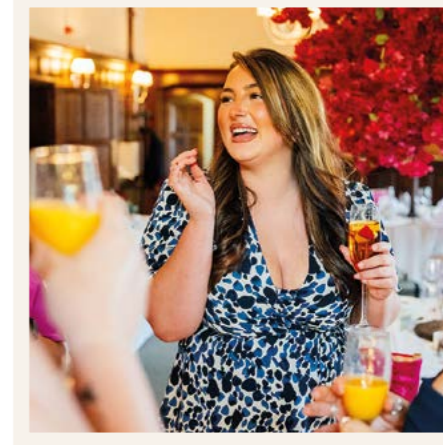
Wedding Breakfast 50 | Reception 50

Our Somerleyton Suite is ideal for more intimate ceremonies, hosting a maximum of 50 guests. This stunning suite is steeped in history and is located directly next to our lounge bar for easy access.





THE IDEAL  
VENUE FOR  
EVERLASTING  
*Memories*



## OUR *gardens*

Sproston Manor has stunning greenery surrounding the venue, which can be utilised for your perfect day.

The Hotel is set in beautiful gardens, these provide the perfect backdrop for photographs and provide abundant room for all of your guests to enjoy.



“  
No amount of thank you's  
will be enough for everything you  
did, we really truly couldn't  
have wished for a better day!”

**AMY & DALE**





## LUXURY *food & drink*

We know that food is an essential part of any wedding and our team are passionate about providing you with the very best service on your big day.

Our head chef has hand-picked a selection of sumptuous menus including a wide range of delicious food for you to choose from. With an extensive wedding breakfast menu and varied evening buffet, you can create a menu to suit your tastes.

“  
*The food was absolutely amazing. We had excellent feedback from our guests about the food so compliments to the chefs who prepared it, it was a big part of the day!*”

ROBYN & KYLE

## OUR BRIDAL *suites*

Our Bridal suites are perfect for newlyweds to spend their first night as a married couple, in the same place as their reception, or even their ceremony. Each of our bridal bedrooms come beautifully decorated for the romantic night.



## OUR *bedrooms*

Your guests can enjoy one of our spacious bedrooms, all furnished with ample amenities. From a double, family room and suite, your friends and family will be well looked after in one of our amazing bedrooms during their stay. Your guests can also enjoy a special discounted wedding rate on their stay.



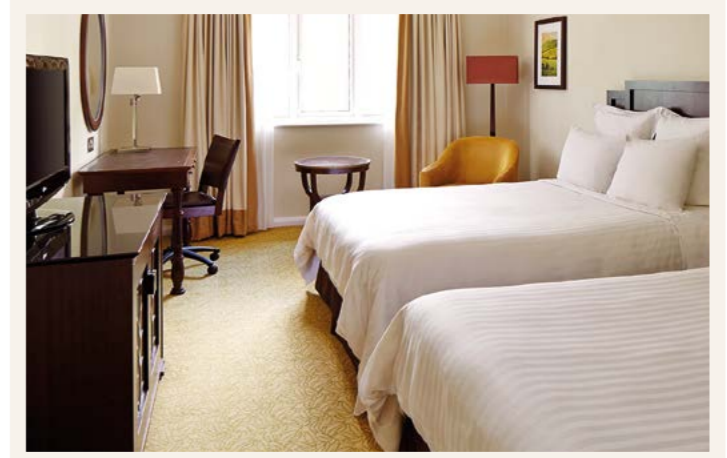
### **4 Poster Suite**

Traditional 4 poster bed with an en-suite, separate walk-in shower, dual sinks and a stunning double tub bath.

**Deluxe Double**  
Double bed, en-suite bathroom, TV, Hairdryer, Tea & Coffee making facilities and free Wi-Fi.



**Family Room**  
2 Double beds, en-suite bathroom, TV, Hairdryer, Tea & Coffee making facilities and free Wi-Fi.



**Guest Bedrooms**  
Double bed, en-suite bathroom, TV, Hairdryer, Tea & Coffee making facilities and free Wi-Fi.



## THE *spa*

Sprowston Manor Hotel are proud to offer guests a luxurious spa furnished with an indoor pool and fully equipped gym facilities. Here you can enjoy a calming swim, sweat it out in the steam room or sit back and relax as you enjoy a full facial and back massage in our beauty room.

As a wedding guest those that are staying overnight have full access to the pool, sauna, steam room, spa and gym area



## WHAT TO DO *next*

If you decide that **Sprowston Manor Hotel** is the perfect venue for you, check availability and book your chosen wedding date with our wedding team.

Our dedicated wedding specialist will be able to answer any question you have about your big day.

## CONTACT INFORMATION

**Tel:** 01603 254 214

**Email:** [weddings763@theelitevenueselection.co.uk](mailto:weddings763@theelitevenueselection.co.uk)

Sprowston Manor Hotel & Country Club,  
Wroxham Road, Norwich, NR7 8RP.

Scan the QR code on your smartphone or tablet camera to visit our wedding website.





